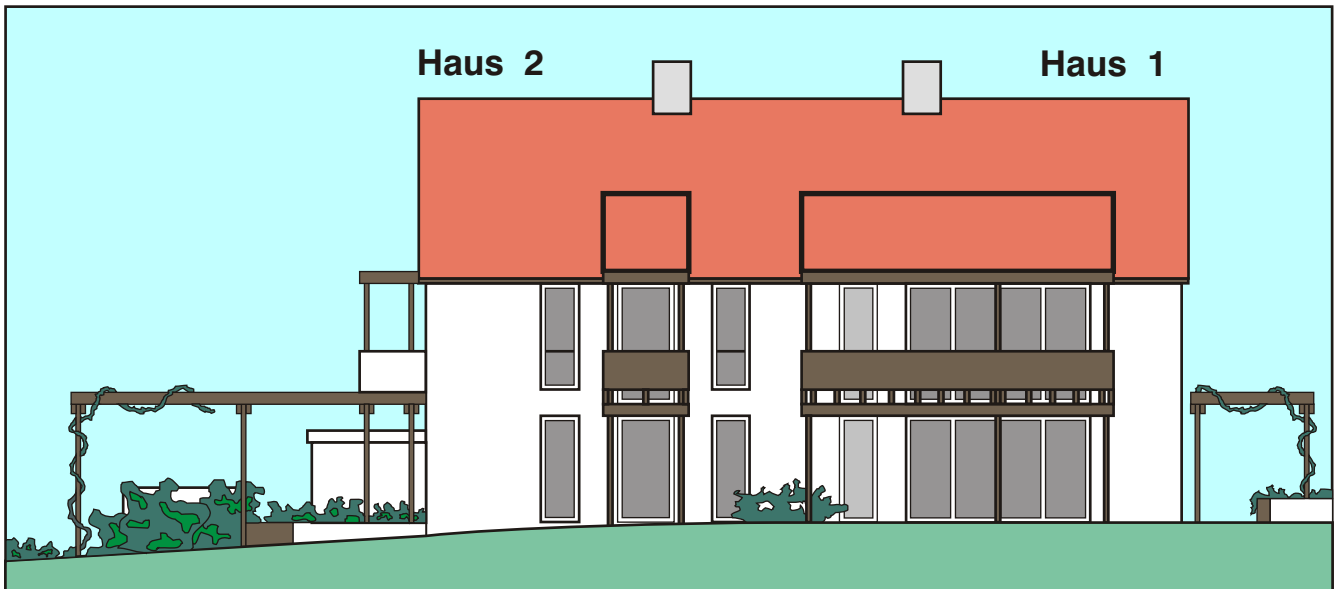
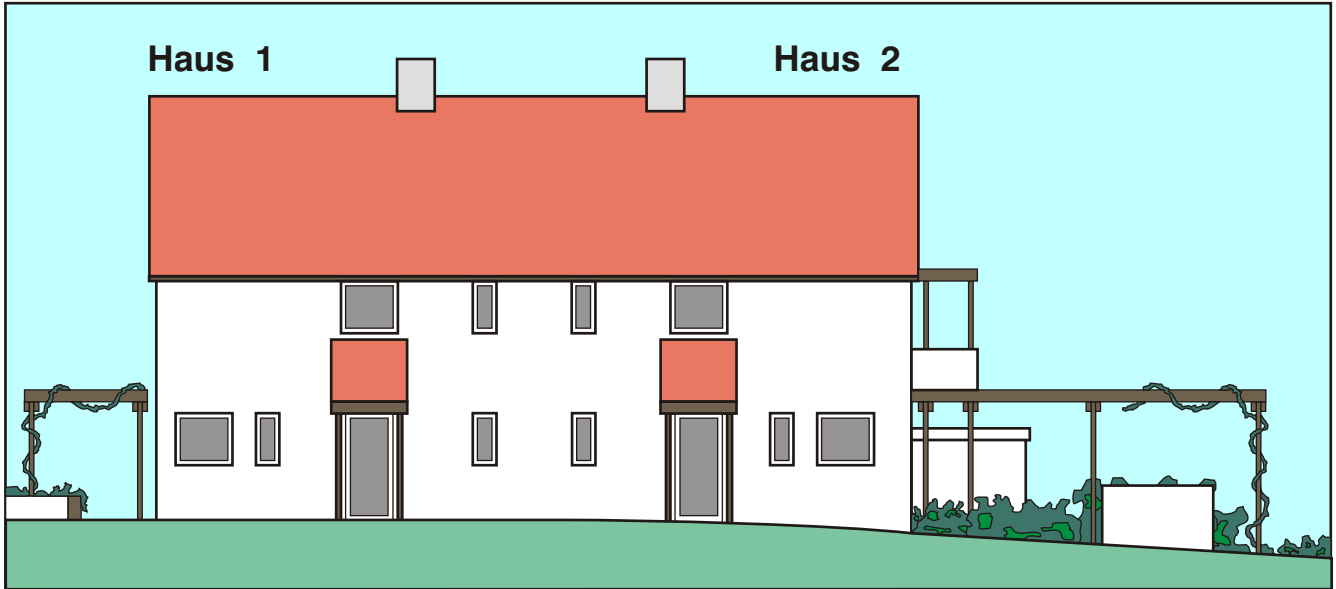
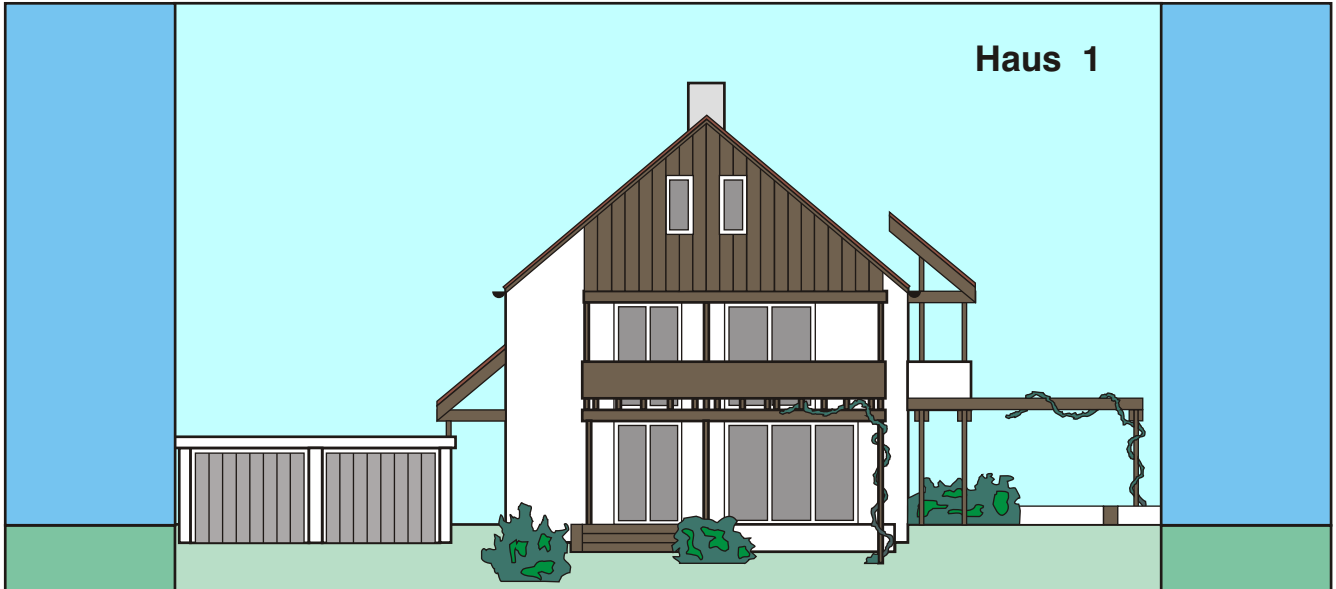


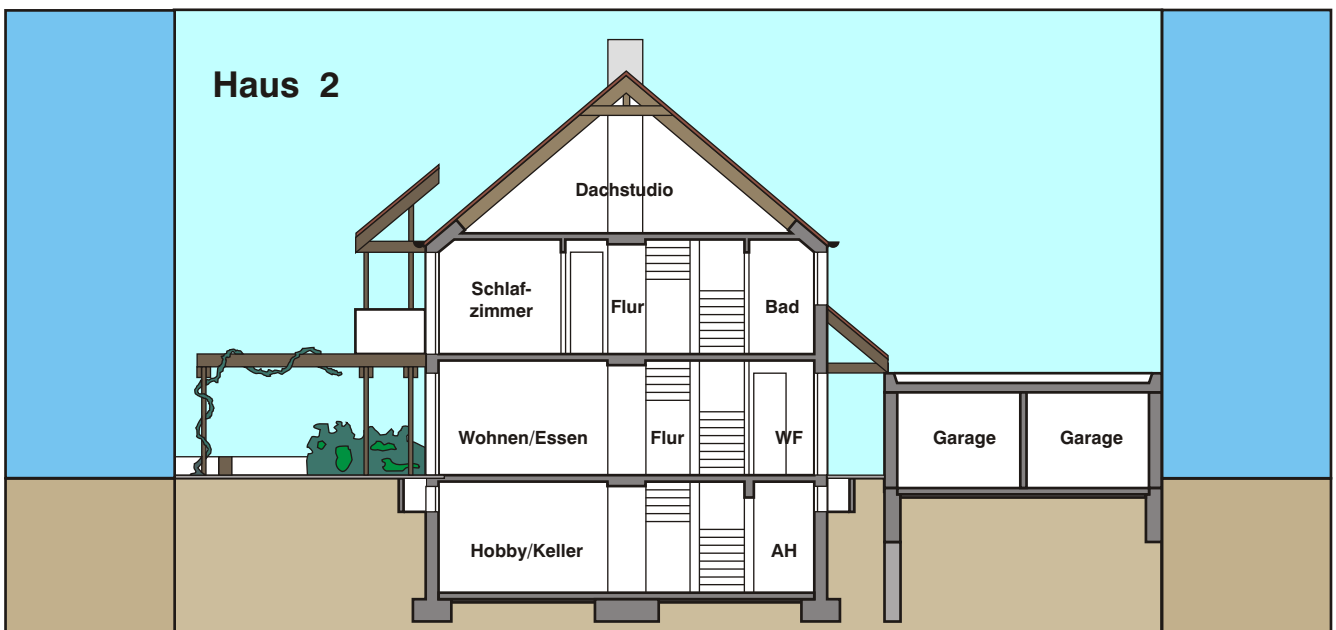
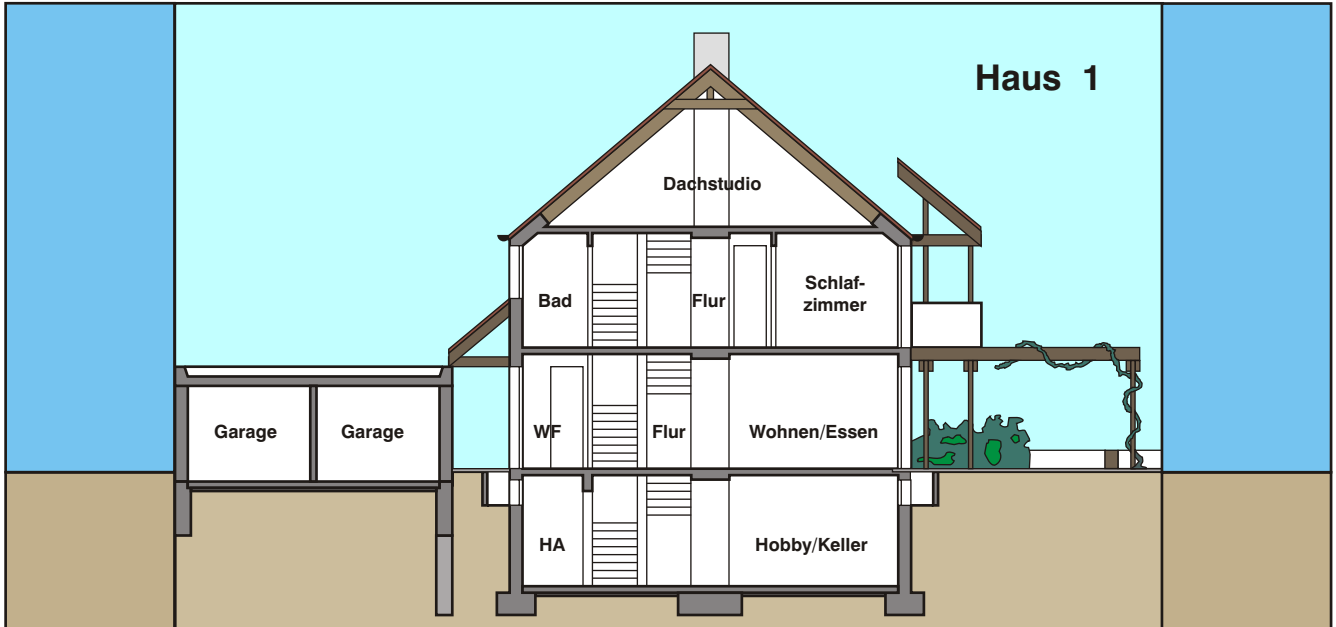
Ansicht von Norden (oben)
Ansicht von Süden (unten)



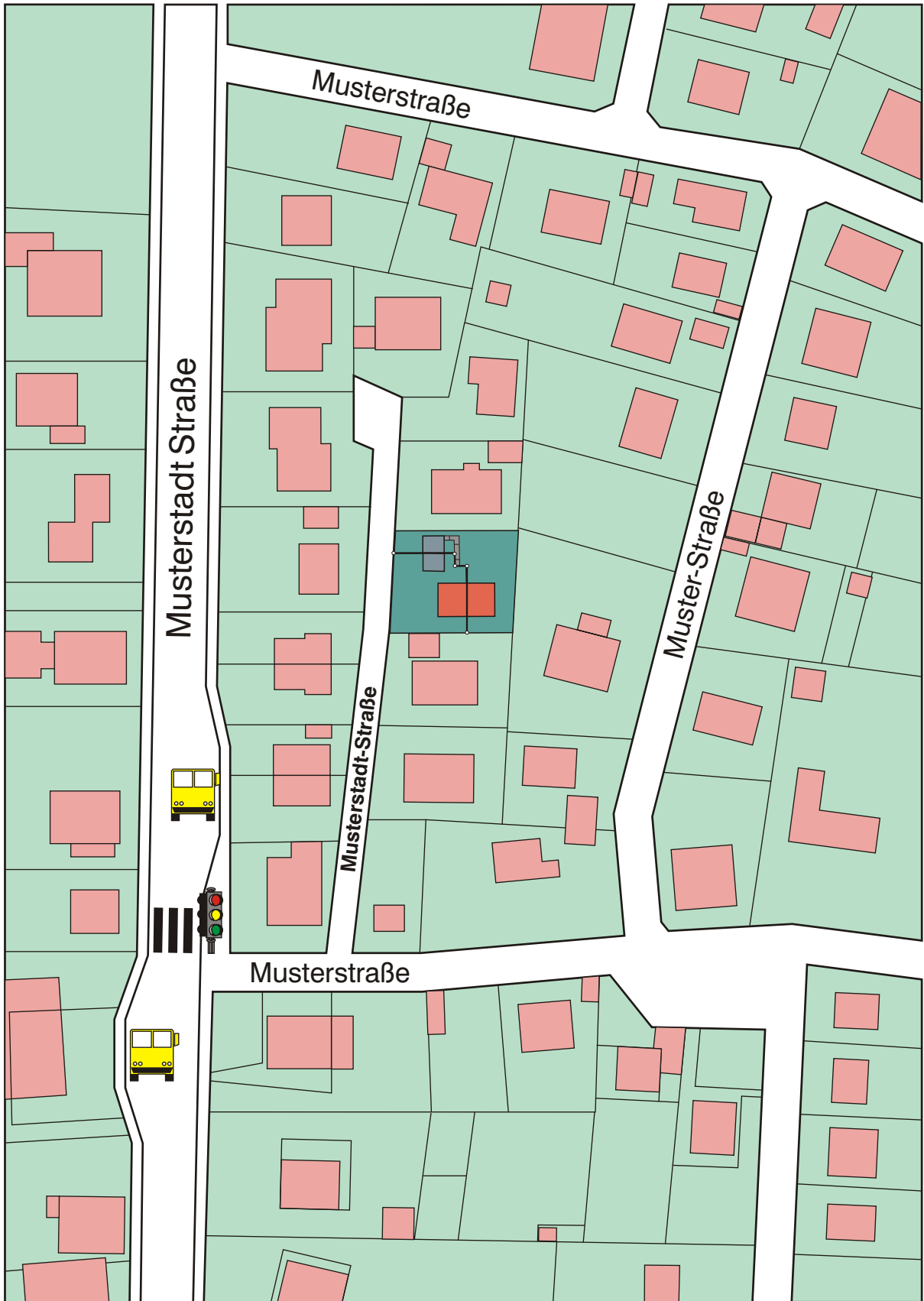
Ansicht von Westen (oben)
Ansicht von Osten (unten)



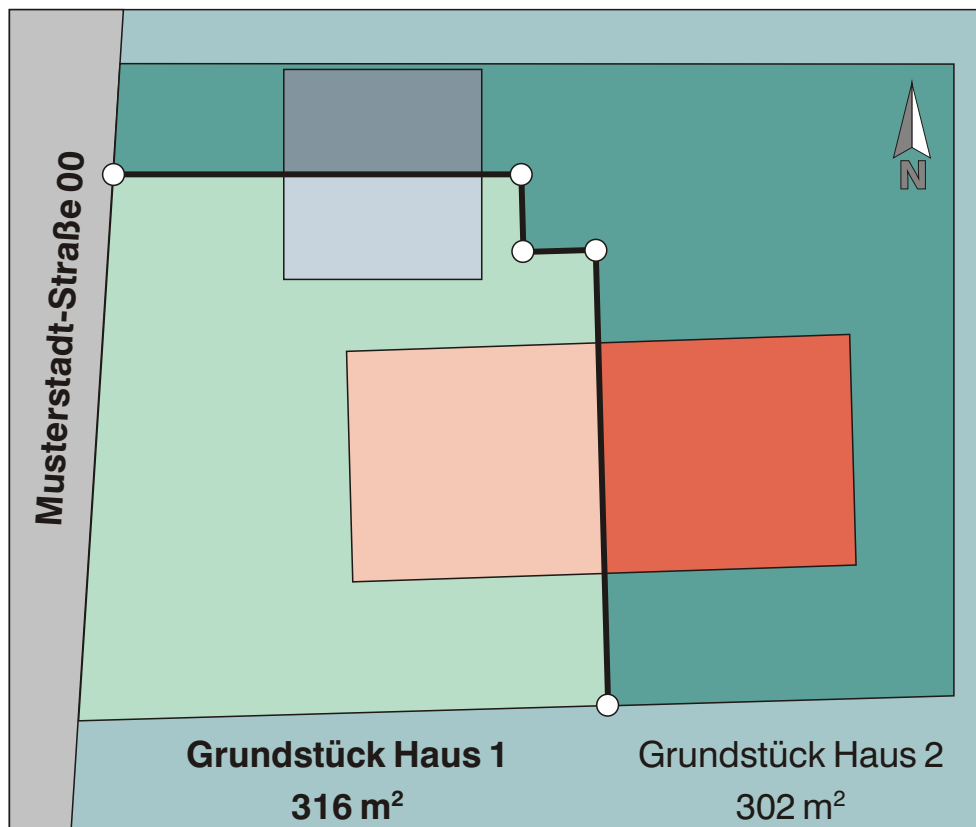
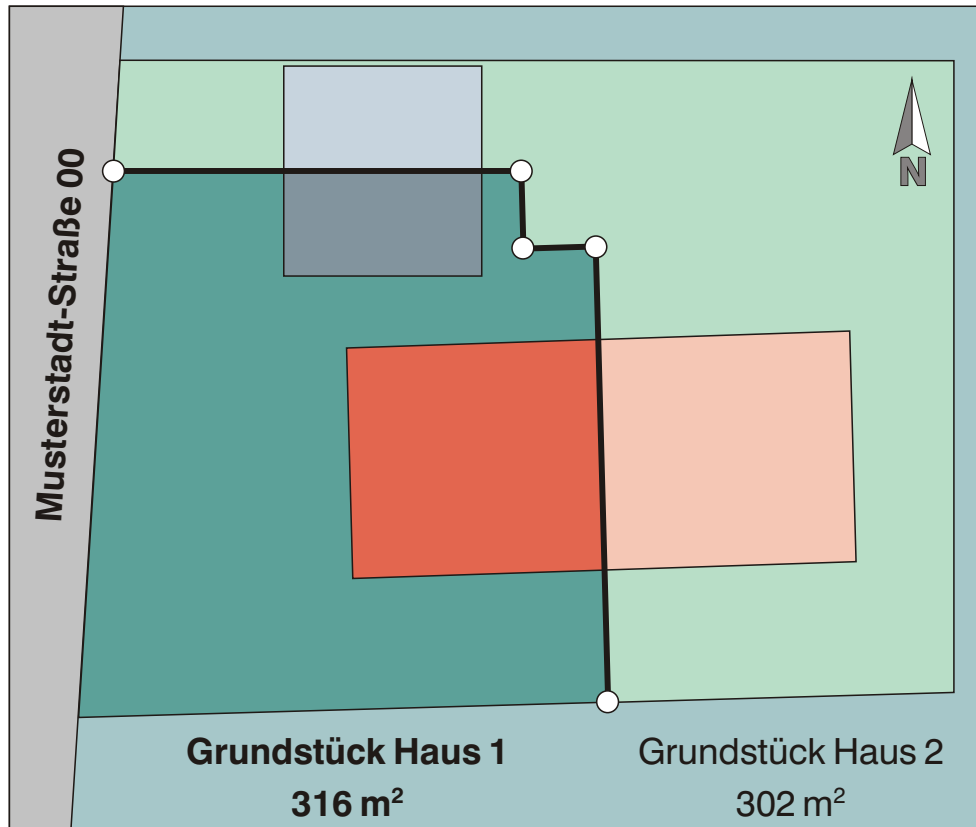
Schnitt von Westen (oben) Schnitt von Osten (unten)



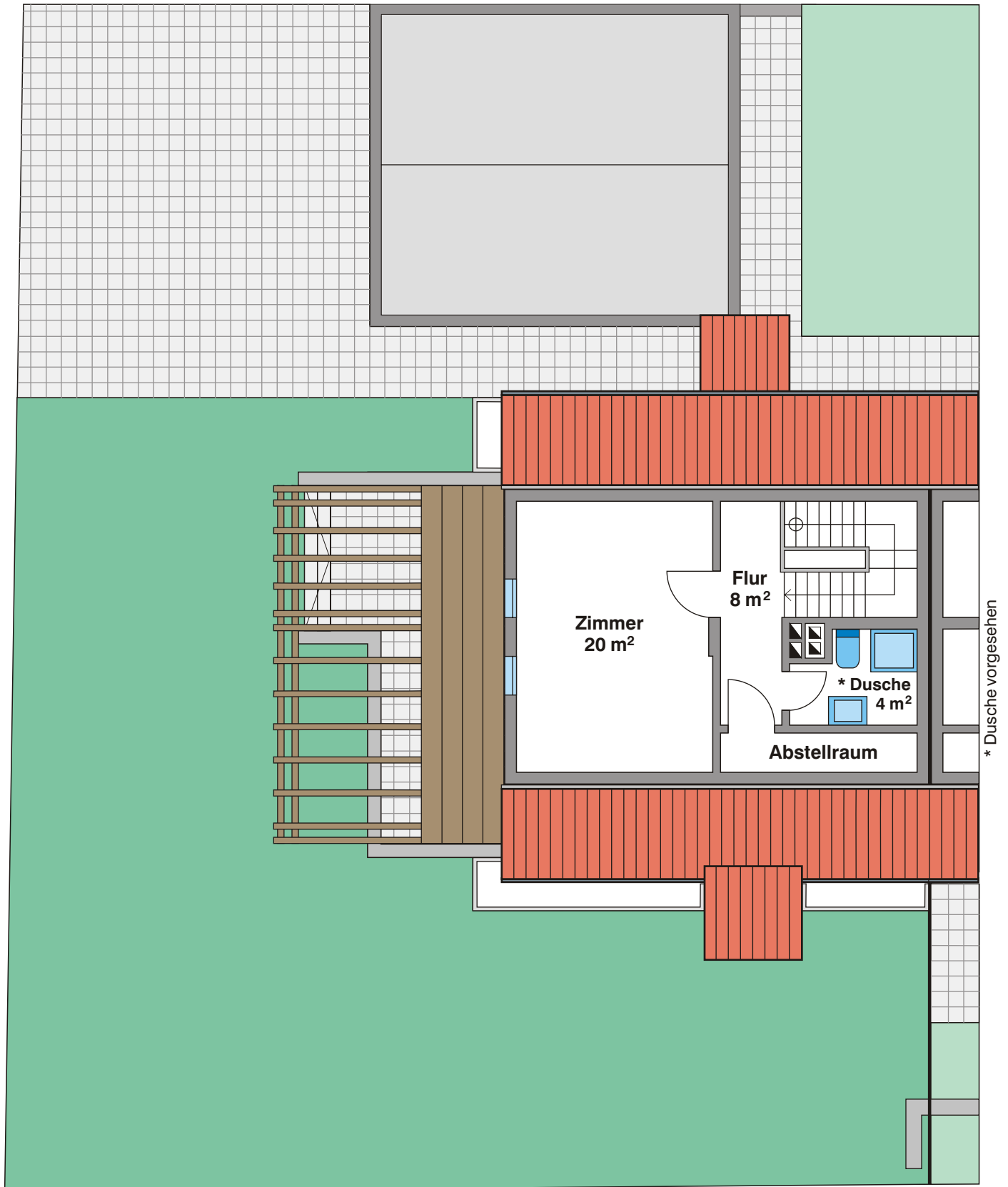
Lageplan



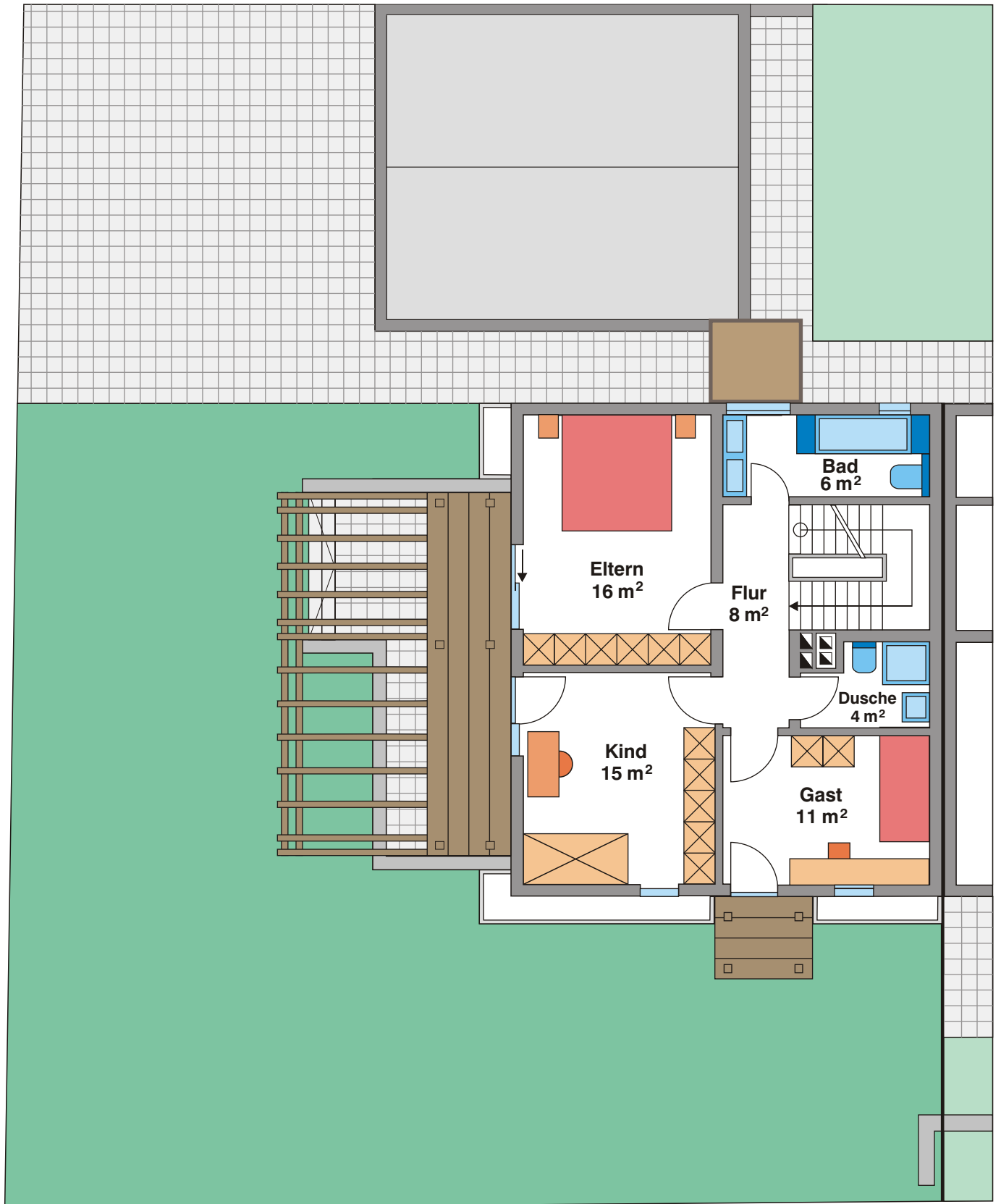
Flächenplan (linke und rechte Doppelhaushälfte)



Dachgeschoss (linke Doppelhaushälfte)



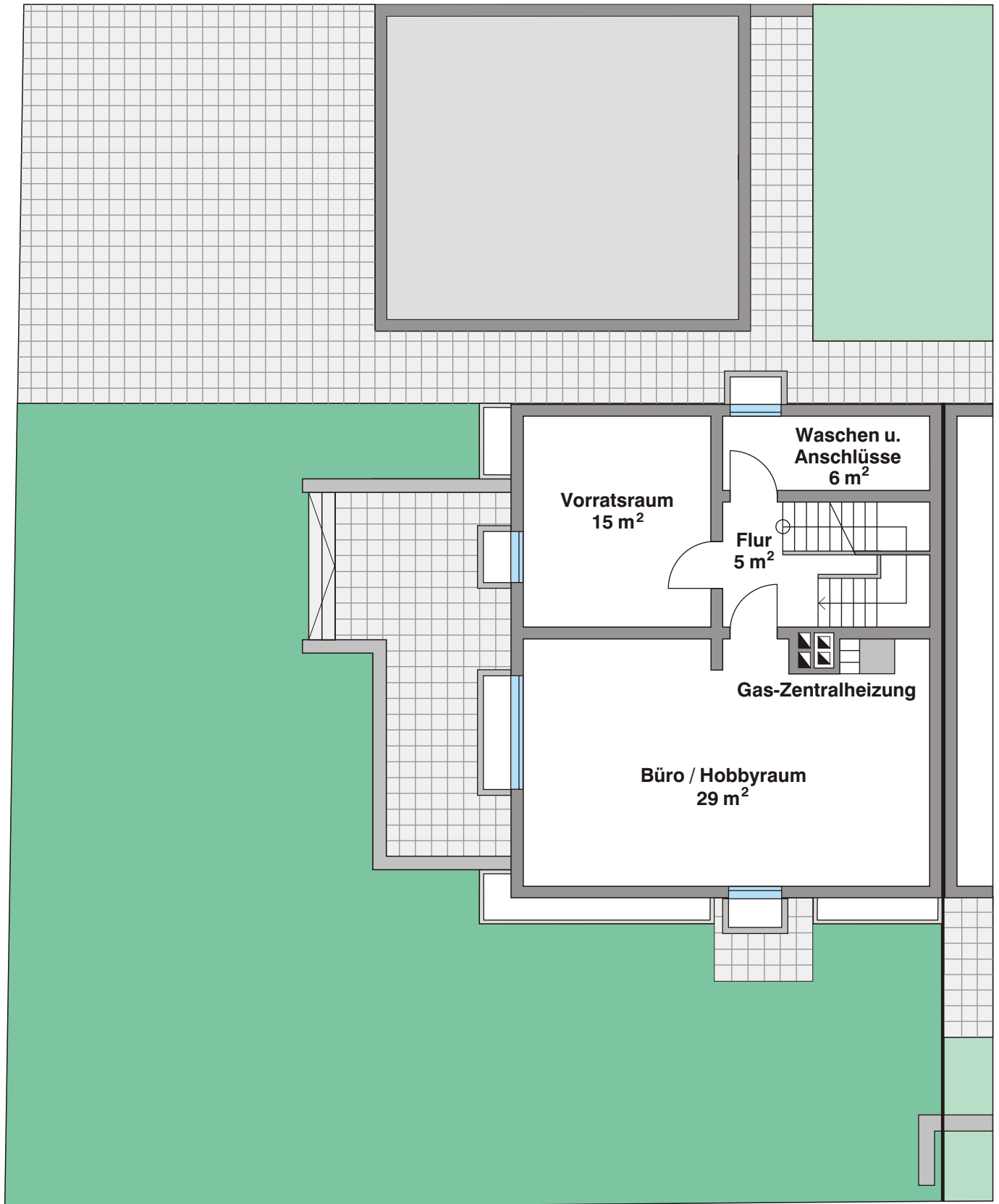
Obergeschoss (linke Doppelhaushälfte)



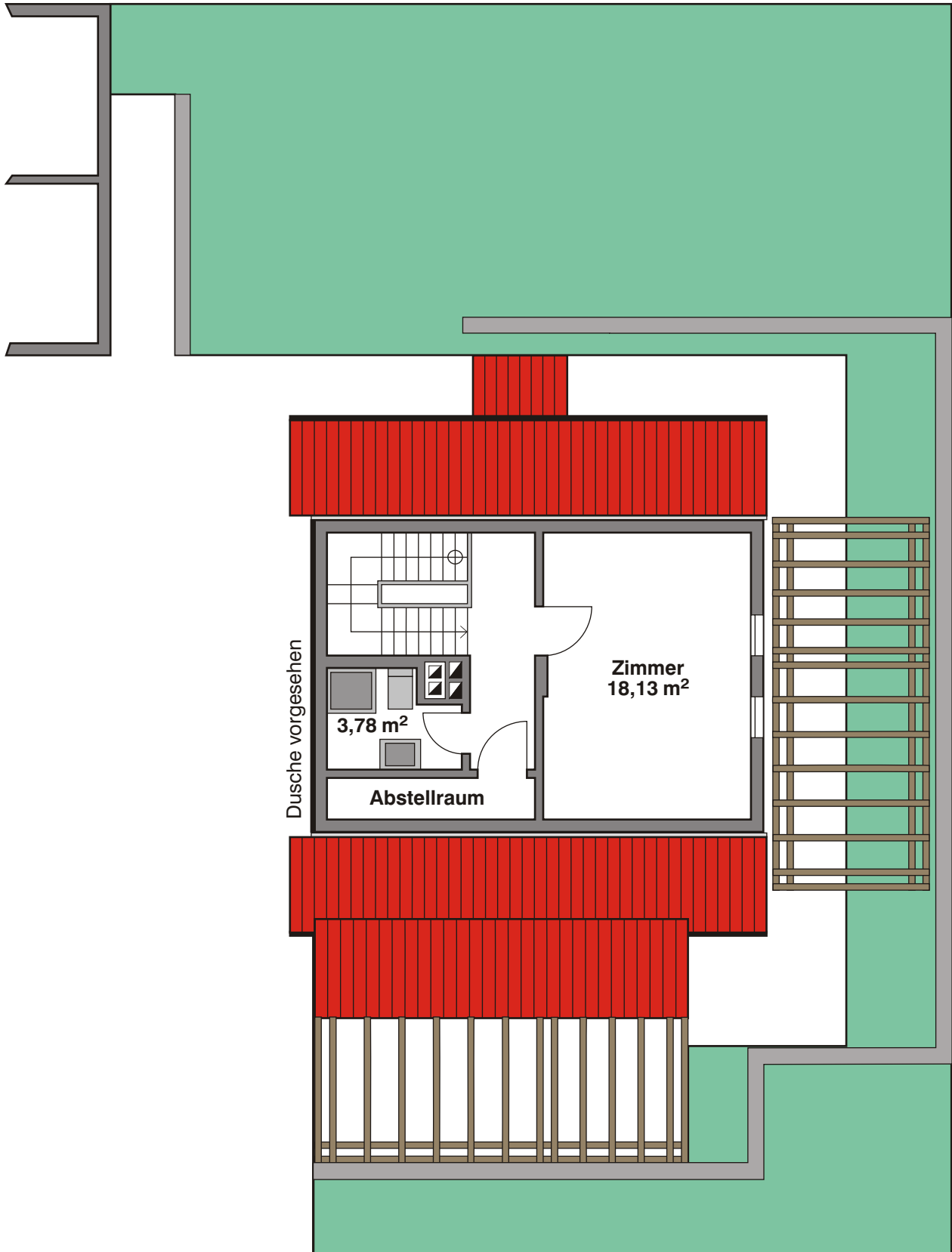
Erdgeschoss (linke Doppelhaushälfte)



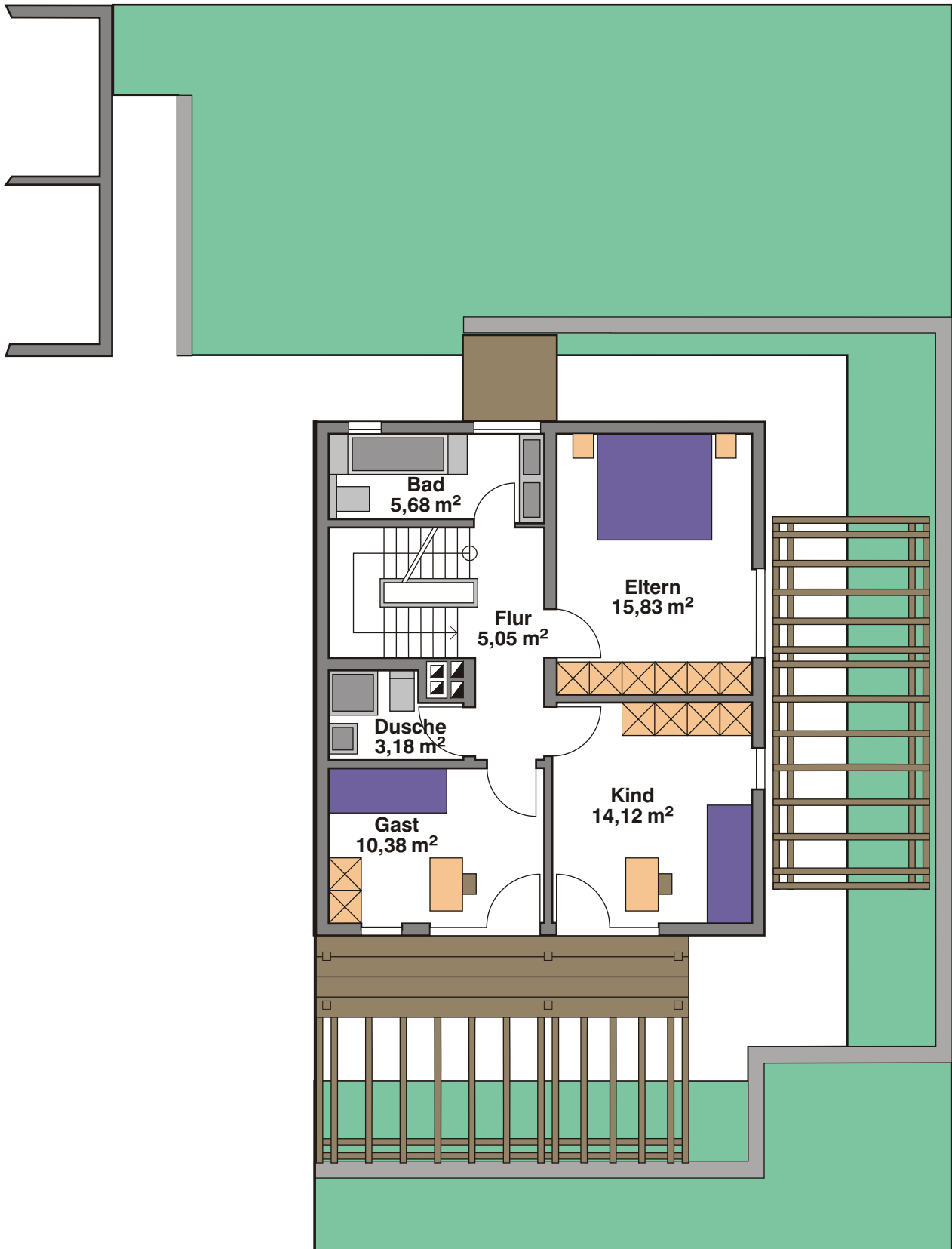
Kellergeschoss (linke Doppelhaushälfte)



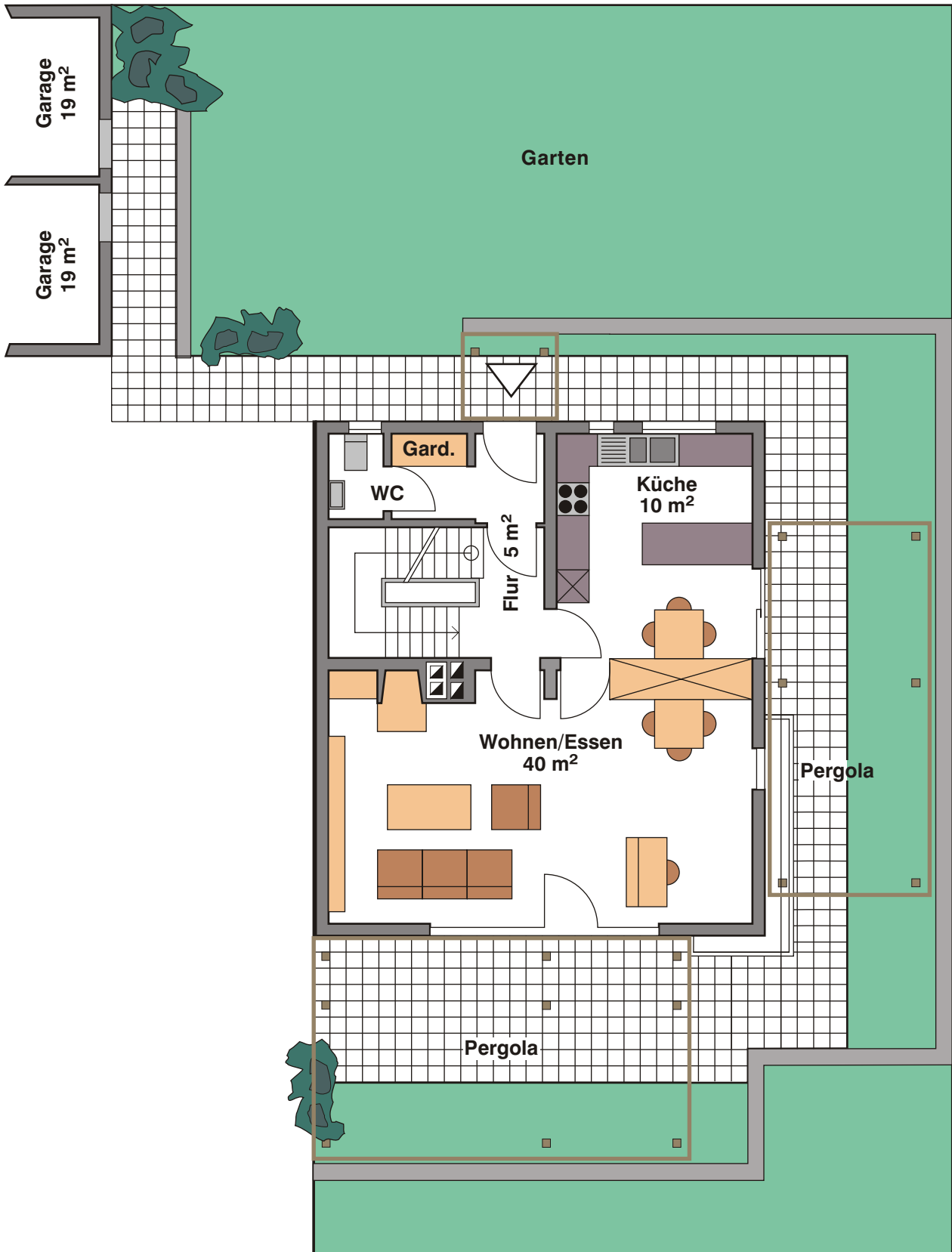
Dachgeschoss (rechte Doppelhaushälfte)



Obergeschoss (rechte Doppelhaushälfte)



Erdgeschoss (rechte Doppelhaushälfte)



Kellergeschoss (rechte Doppelhaushälfte)

